

HAFAS Mobile – timetable information for Android™

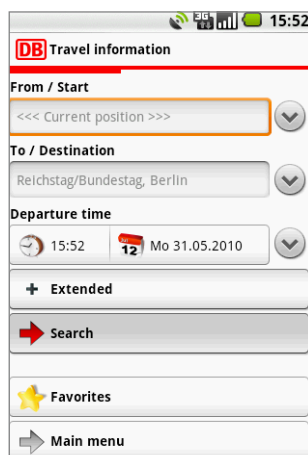
With HAFAS for Android™ travel planning gets going for all the Smartphones that use the operating system by Google for mobile devices. Android runs on mobile devices from different manufacturers such as HTC, Samsung, Sony Ericsson and Motorola. HAFAS plays on the good hardware features of these devices. These include large displays and touch functionality, making operation particularly easy. The open operating system also offers the best conditions to integrate other applications, such as Google Maps.

Positioning, tracking, maps and more

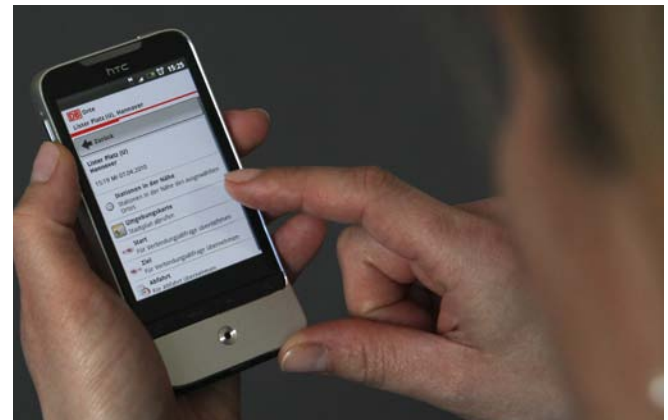
Based on HAFAS Mobile, HaCon has adapted HAFAS for Android to the performance of the operating system. This includes most optimal positioning capabilities via GPS, WLAN or cell as well as a compass functionality. Because of the automatic tracking, stations in the vicinity of the passenger are displayed. The walking route including the distance in metres, is provided and marked on a map. As a starting point or final destination, the current position of the passenger can be adopted when he requests travel information. In addition to maps and satellite views, the integrated Google Maps application also includes station maps.

Below left: The DB Railnavigator for Android adopts the current position of the passenger as a starting point for planning the journey.

Below right: The overview shows different options when the traveller can get started from his current position in order to reach his destination, for how long he will be travelling and which modes of transport he will use on trip. The red cross shows that there is real-time information available for the connection at 16:15 h. The green mark indicates that the connections at 14:15 h and 15:15 h will be held as scheduled.



| Dep | Arr | Ch | Dur | Products |
|----------------------|-------|----|------|-----------------|
| Earlier | | | | |
| Mo 31.05.2010 | | | | |
| 13:15 | 15:22 | 2x | 2:07 | STB ICE Bus |
| ✓ 14:15 | 16:32 | 2x | 2:17 | STB ICE Bus |
| ✓ 15:15 | 17:22 | 2x | 2:07 | STB ICE Bus |
| ✗ 16:15 | 18:23 | 2x | 2:08 | STB ICE Bus |
| 17:15 | 19:23 | 2x | 2:08 | STB IC Bus |
| 18:15 | 20:41 | 3x | 2:26 | STB ICE Bus Bus |
| 18:15 | 20:45 | 2x | 2:30 | STB ICE Bus |
| 19:14 | 21:28 | 2x | 2:14 | STB ICE Bus |



Your benefits

HAFAS Mobile for Smartphones which are supplied with Google's mobile operating system Android™ makes timetable information on trip especially attractive:

- Fast and convenient access to all timetable information including real-time data
- Individual timetable information
- Very easy, intuitive navigation
- Visualisation via scalable maps and compass

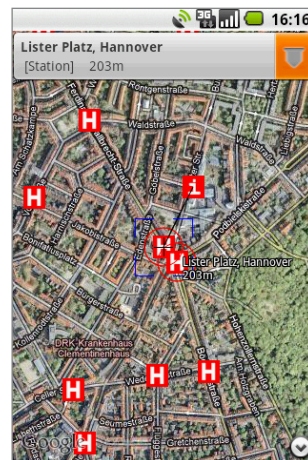
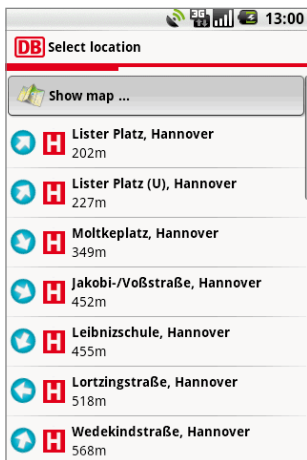
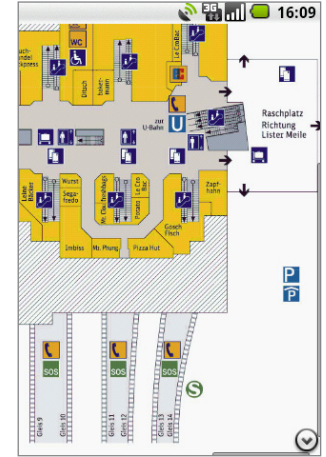
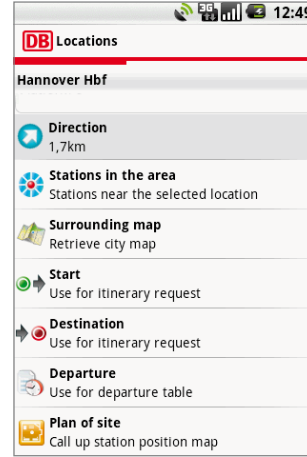
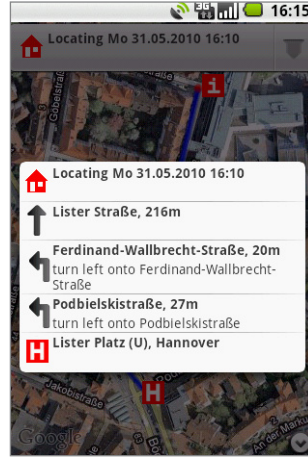
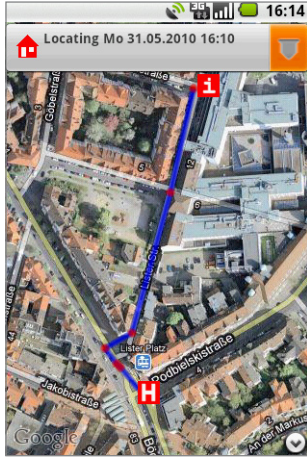
Below left: The details show here, that ICE 941 departing at Hannover main station is five minutes late. This view pops up when the user clicks on the connection marked with a red cross in the screen next to it on the left.

Below right: Another detailed view for a possible connection from the located position shows the next two travel sections: walking to the next stop and the tram departing from the next stop. With a click on "show map", the map view pops up for navigation to the stop "Lister Platz" (on page 2).

| Time | Station |
|-------|------------------------------|
| 16:31 | Hannover Hbf Platform 10 |
| 18:11 | Berlin Hbf Platform 12 A - D |

| |
|------------------------------------|
| walk 5 minutes |
| 19:13 Locating Mo 31.05.2010 15:53 |
| 19:18 Lister Platz (U), Hannover |
| STB 7 to Wettbergen |
| 19:18 Lister Platz (U), Hannover |
| 19:21 Hauptbahnhof (U), Hannover |
| walk 8 minutes |

HAFAS Mobile – timetable information for Android-Smartphones



Above, 1st from left: The map shows pedestrian navigation from the located position to Lister Platz, the closest station. With a click on the icon right on top a textual description pops up.

Above, 2nd from left: From the map view of the pedestrian the routing the user can switch to the textual description with detailed directions. An arrow serves for visualisation.

Above, 3rd from left: Further details are available, e.g. concerning Hannover main station. The distance from the located position is 1.7 kilometres. The arrow indicates the direction. By clicking on "plan of site" the selected view pops up.

Above right: For better orientation at the station, here Hannover main station, site maps have been integrated into the application.

Above left: This view shows the stops that can be found near the current position. As soon as a location is selected, more information can be retrieved. Here, the white arrow on blue serves as a compass: It shows travellers the direction in which they find the nearest stations. By clicking on "show map" the user switches directly to the street view (shown on the right).

Above right: The map indicates that the nearest stop is "Lister Platz". It can be reached within 203 metres.

HAFAS Mobile is the perfect connection to your customers

No matter which mobile devices your passengers have chosen in order to access HAFAS – with HAFAS Mobile you deliver travel information straight to the point: exactly in the moment when your customers need it the most: on trip. Thereby, mobile HAFAS solutions are always flexible enough to deliver ideal timetable information. As a result, your passengers save time – when planning their trips and also on their way to stops and stations or during transfers. Real-time information enables your customers to make the most of waiting times which can be utilised more reasonably and therefore are perceived more positively.

In short: HAFAS Mobile complements your travel information in a contemporary way and helps you satisfying your customers even more.

Features of the HAFAS Mobile application for Android™-Smartphones

Overview (example of DB Railnavigator):

- An overview provides the passenger with a list of the next departures to the desired destination, including departure time (plus information on potential delays), number of change-overs, travel time and mode of transport.
- The DB Railnavigator for Android selects the detected position of the passenger as a starting point for planning his journey.
- Station maps show passengers at a glance which facilities are available and where. These maps provide for very easy orientation – whether at the departure station, during a change-over or at the final destination.
- Based on their current position, passengers get information about connection details as well as a map display for the walk to the next stop.
- Besides the map display, the DB Railnavigator also offers a descriptive text with precise directions – including an assisting visualisation via arrows.
- If passengers want to find out the direction of the nearest stop, arrows indicate the path – just like a compass. By clicking on "Show Map" the user can switch easily between the different views (list, map).